

## Knowledge Base Article: Article 212

**How to solve a problem for Click&DECiDE Cubes?**

**Date:** October 19th, 2010

**Problem:**

I want to create or run a Cube with Click&DECIDE Buider or run a Cube through the Web Portal and I get some errors.

**Explanation:**

The reasons could be:

1. The Microsoft Web Component 2003 has not been installed or not successfully.
2. The OWC11.DLL has not been registered.
3. The Microsoft OLE DB Provider for Analysis Services is not the one expected, depending on your MS SQL Server version (2000 or 2005). If you have MS SQL Server 2005, you also need the MSXML 6.0 component.
4. You have a problem with the Microsoft Text ODBC driver against CSV files. See page 4 How to Debug a Cube.

**Solution:**

1. Uninstall and reinstall the Microsoft Web Component 2003 from the Click&DECiDE Setup directory: C:\Program Files\Click and DECiDE\SetupFiles\setup\SSSetupPrerequisites\Microsoft Office 2003 Web Components or from the Microsoft Web Site if you get this message when running a cube through the Web Portal:

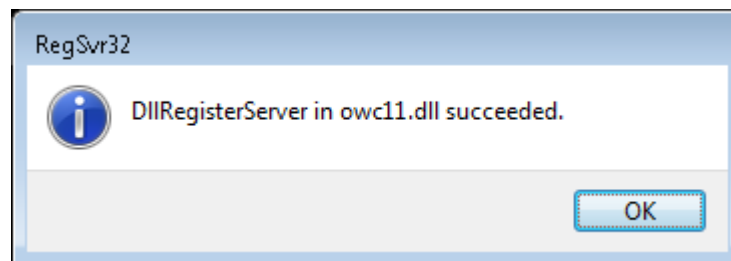
This page requires the Microsoft Office Web Components. [Click here to install Microsoft Office Web Components.](#)

Click the link to get the file download page:

<http://www.microsoft.com/downloads/en/details.aspx?FamilyID=7287252c-402e-4f72-97a5-e0fd290d4b76&DisplayLang=en>

And select the required language, and then install the owc11.exe program.

2. The Microsoft Web Component 2003 has been installed but you still get errors when trying to run or create a cube. Try to register the OWC11.DLL component as follow:
  - Open a Command Prompt window (Run as Administrator)
  - Go to the C:\Program Files\Common Files\microsoft shared\Web Components\11 directory
  - Enter the command: regsvr32 "C:\Program Files\Common Files\microsoft shared\Web Components\11\owc11.dll" and press <Enter>
  - You should get the message:



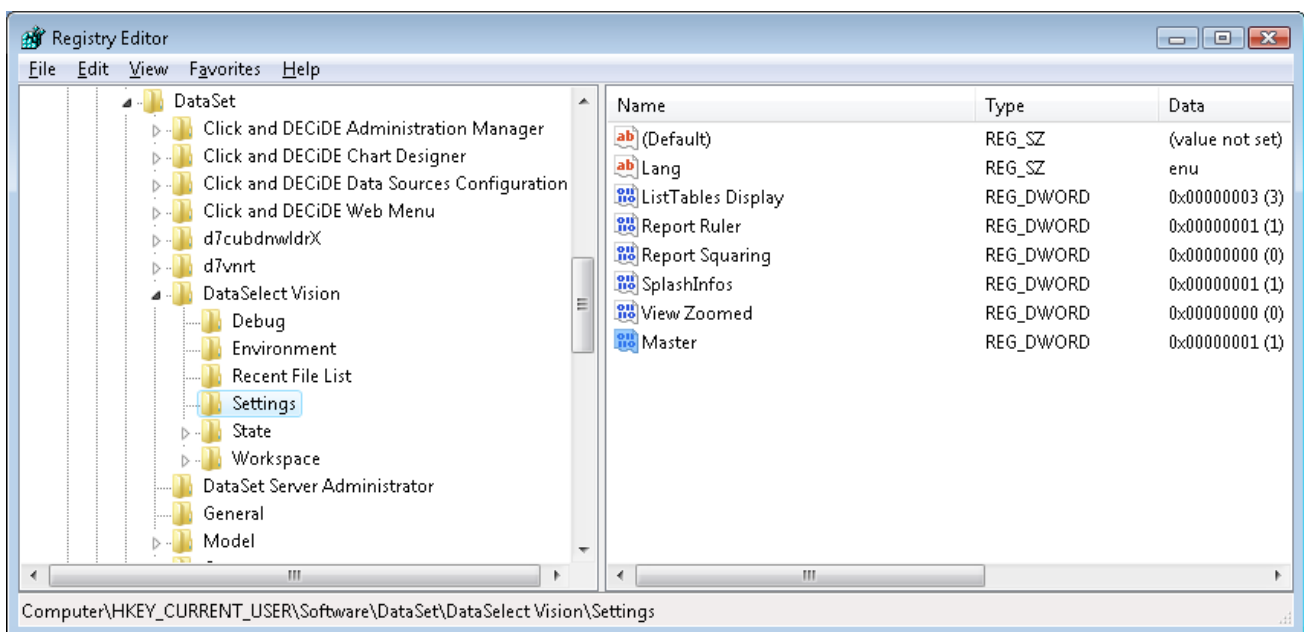
3. The Microsoft OLE DB Provider for Analysis Services is not the one expected, depending on your MS SQL Server version (2000 or 2005). The requirements are the following:
  - Against MS SQL Server 2000, the client machine needs to have Microsoft OLE DB Provider for Analysis Services 8.0
  - Against MS SQL Server 2005, the client machine needs to have Microsoft OLE DB Provider for Analysis Services 9.0 and MSXML 6.0.

If you have a client PC that want to create a cube from Analysis Services against a server having MS SQL Server 2005, and if the client PC doesn't have the MSXML 6.0 and Microsoft OLE DB Provider for Analysis Services 9.0, you will get an error message when connecting to the database: **Test connection failed because of an error in initializing provider. Object not found.**

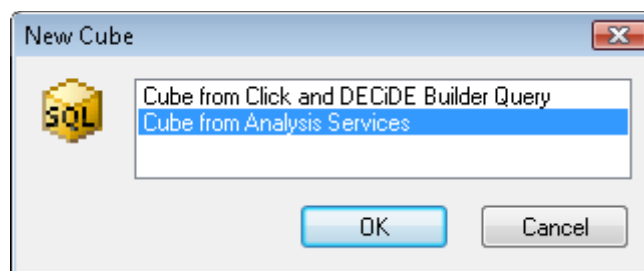
Even if you are not running a cube against an Analysis Services database, follow the next steps to display an additional Tab in the Click&DECiDE Buidler command **File> New> Cube** allowing to know what is the installed version:

**How to display this additional Tab?**

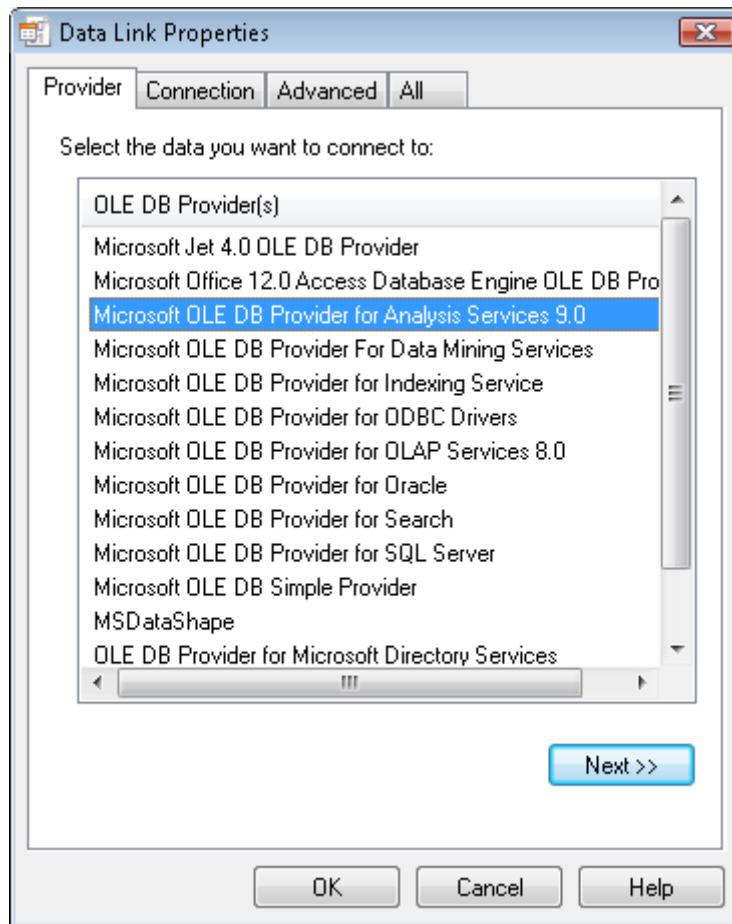
- Open REGEDIT
- Go to the following key:
- HKEY\_CURRENT\_USER\Software\DataSet\DataSelect Vision\Settings
- On the right window, add a DWORD (32-bit) key named **Master**
- Change the value to **1** and validate



- Then, from Click&DECiDE Builder, the Provider Tab will be displayed when starting to connect to an Analysis Services, even if you do not have such database.
- Click the command **File> New> Cube**



- Select **“Cube from Analysis Services”** and you will get this dialog box with an additional Tab named “Provider”, select this Provider Tab to check the version of the Microsoft OLE DB Provider for Analysis Services 9.0 and/or Microsoft OLE DB Provider for OLAP Services 8.0:



If the **Microsoft OLE DB Provider for Analysis Services 9.0** is missing, here is the way to install it:

**Steps 1:** First install the **MSXML 6.0** using the link:

<http://www.microsoft.com/downloads/details.aspx?FamilyId=d21c292c-368b-4ce1-9dab-3e9827b70604&displaylang=en>

**Steps 2:** Then install the Microsoft OLE DB Provider for Analysis Services 9.0: SQL Server 2005 Feature Pack from February 2007

<http://www.microsoft.com/downloads/details.aspx?familyid=50B97994-8453-4998-8226-FA42EC403D17&displaylang=en>

Click **Download file** below and select the **SQLServer2005\_ASOLEDB9.msi**

#### **Microsoft SQL Server 2005 Analysis Services 9.0 OLE DB Provider**

The Analysis Services 9.0 OLE DB Provider is a COM component that software developers can use to create client-side applications that browse metadata and query data stored in Microsoft SQL Server 2005 Analysis Services. This provider implements both the OLE DB specification and the specification's extensions for online analytical processing (OLAP) and data mining.

**Note:** Microsoft SQL Server 2005 Analysis Services 9.0 OLE DB Provider requires **Microsoft Core XML Services (MSXML) 6.0**, also available on this page.

Audience(s): **Customer, Partner, Developer**

[X86 Package](#) (SQLServer2005\_ASOLEDB9.msi) - 12160 KB

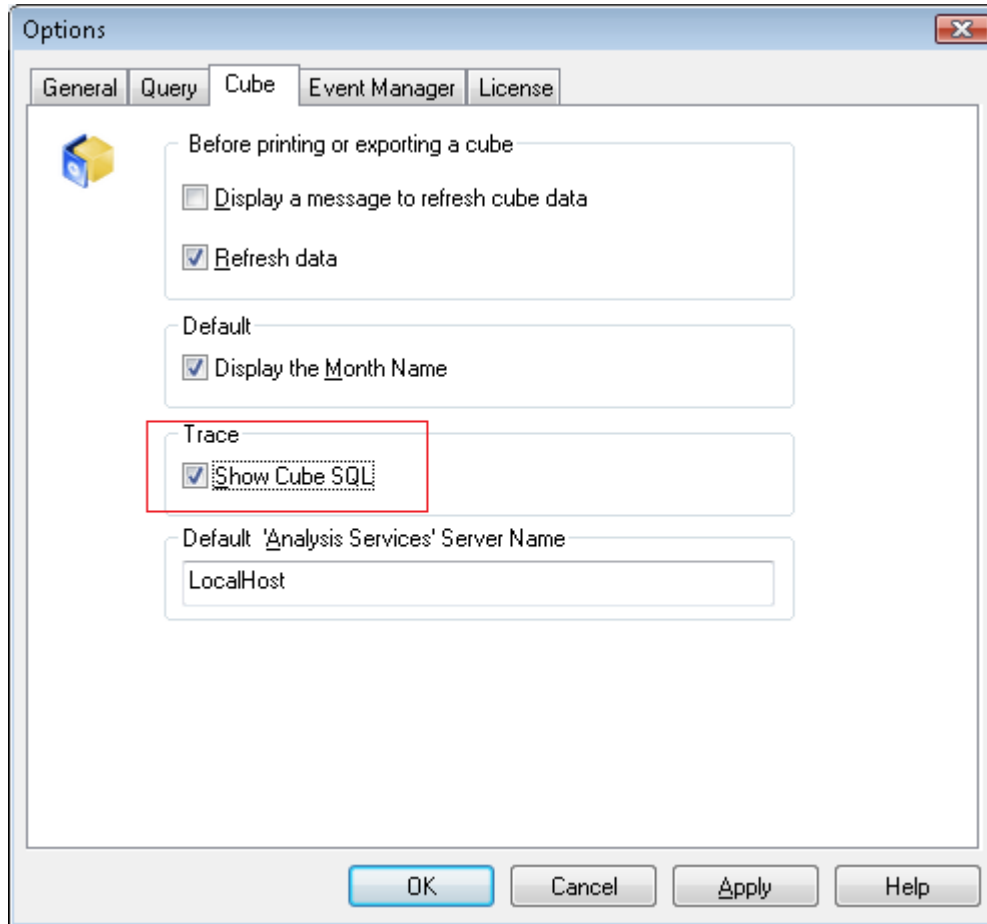
[X64 Package](#) (SQLServer2005\_ASOLEDB9\_x64.msi) - 27981 KB

[IA64 Package](#) (SQLServer2005\_ASOLEDB9\_ia64.msi) - 34700 KB

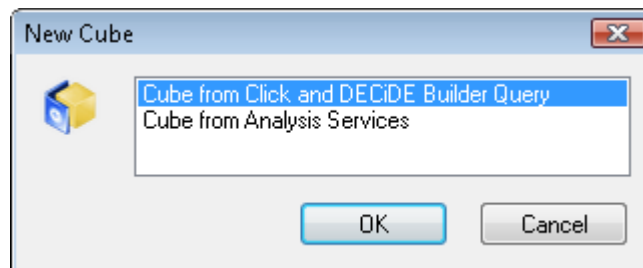
### Cube Debug:

Sometimes the Click&DECiDE Support could ask you to help to debug the problem and see why and when an error occurs when running or creating a cube. In that case, please follow the next steps:

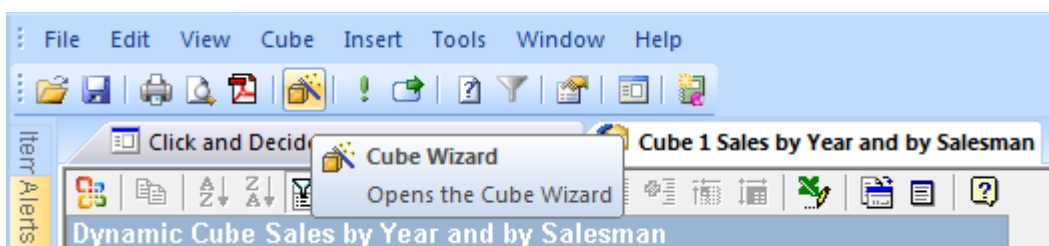
1. Activating the **Show SQL Cube** option: start Click&DECiDE Builder and run the command **Tools> Options> Cube**.



2. Click **OK**
3. Create a new cube from an existing query:

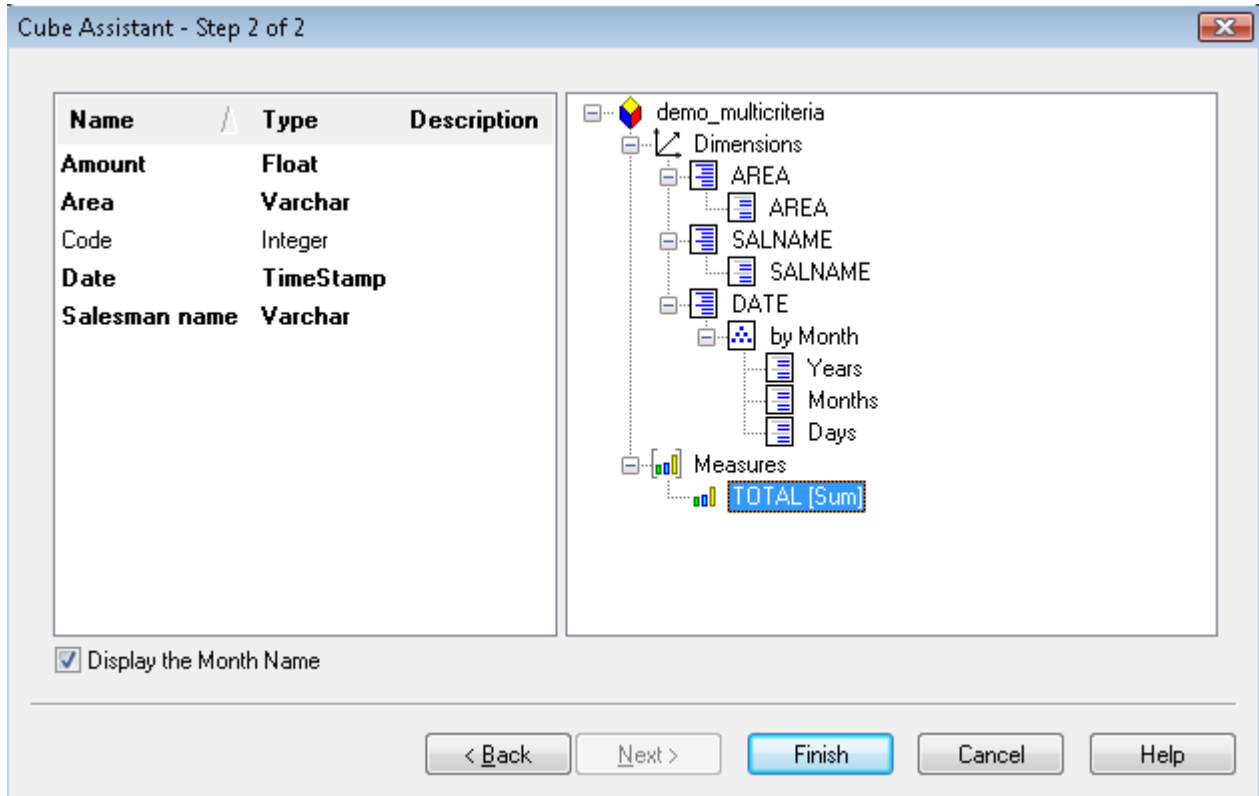


4. If you are inside an existing Cube, click the Cube wizard icon:

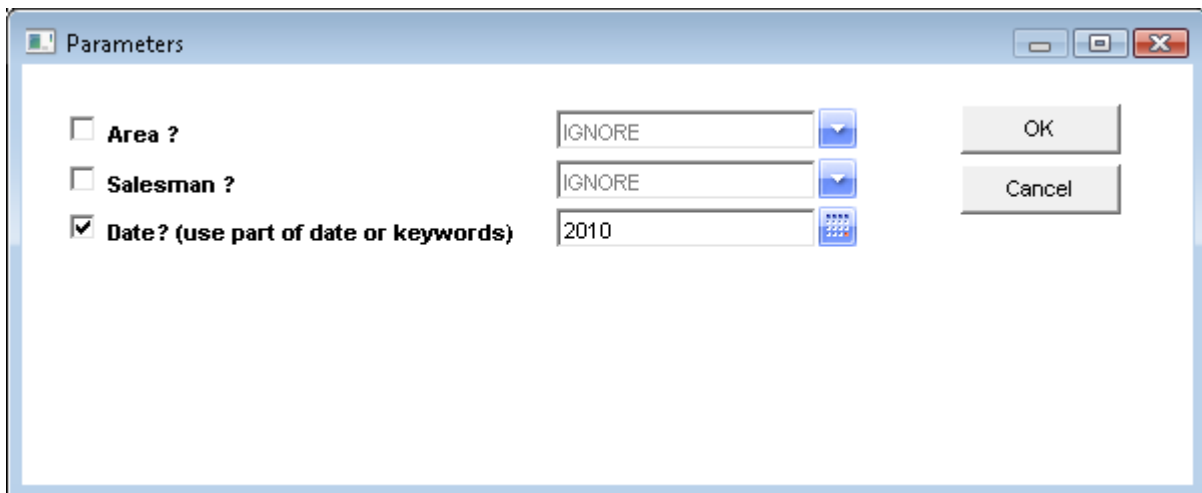


The reason is that the Show SQL Cube Option is only available when starting from the Cube wizard.

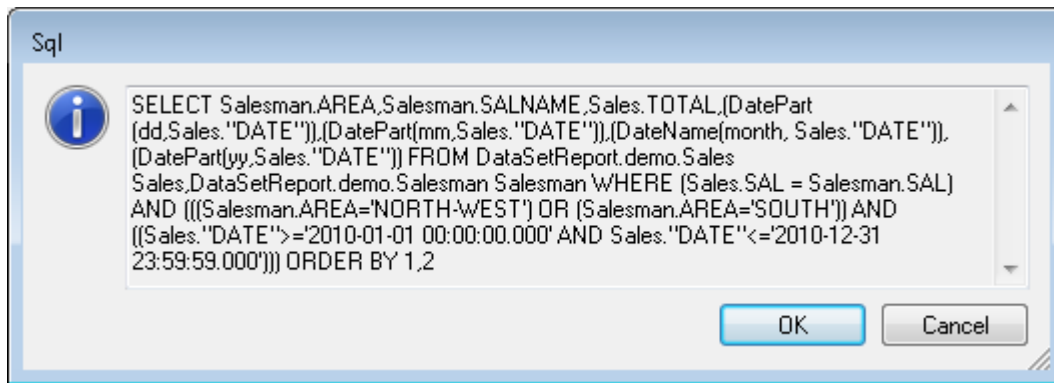
- Select the required Dimension and Measures:



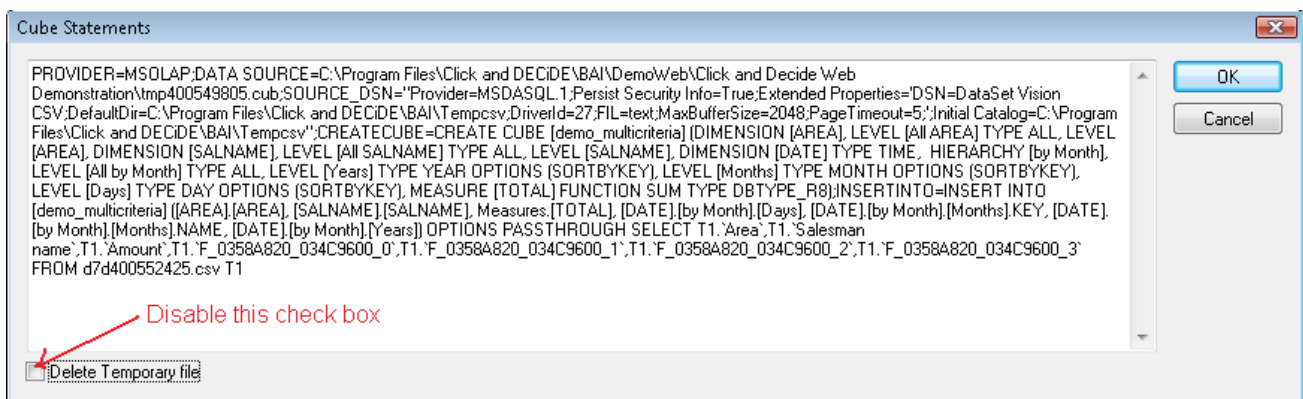
- Click **Finish**



- Specify the parameter values if needed, then click **OK**



8. Make a copy of the SQL content of the above screen to be sent to the Click&DECiDE Team Support, then click **OK**. If any error occurs before or after this step, make a copy of this error.



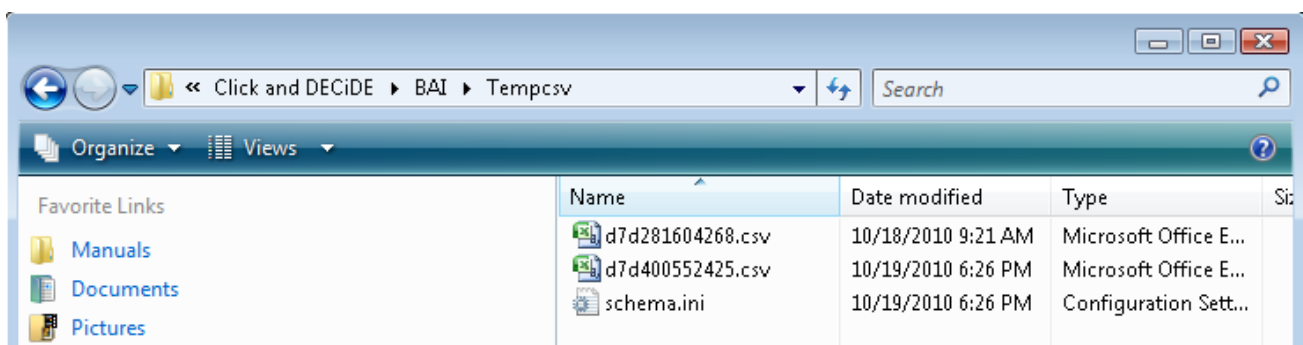
9. In the above screen make a copy of the SQL content to be sent to the Click&DECiDE Team Support and uncheck the “Delete Temporary File” option. Then click **OK**. If any error occurs before or after this step, make a copy of this error.

10. If no error occurs, you should get the cube correctly.

11. If an error occurs, make sure to copy and paste any text or screen that can help the Team Support.

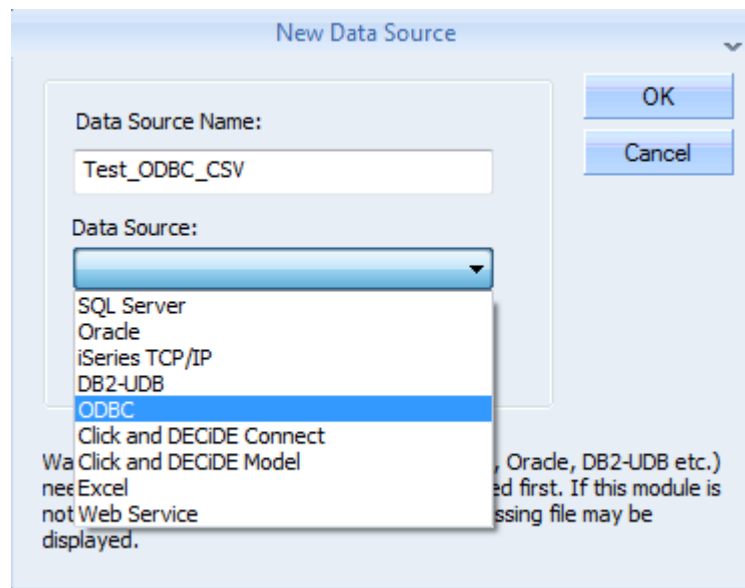
12. If the Team Support asks you to get the **Temporary Files**, do the following:

- Go to the C:\Program Files\Click and DECiDE\BAI\Tempcsv directory
- Make a copy of the csv files and ini files and send them to Click&DECiDE Support.

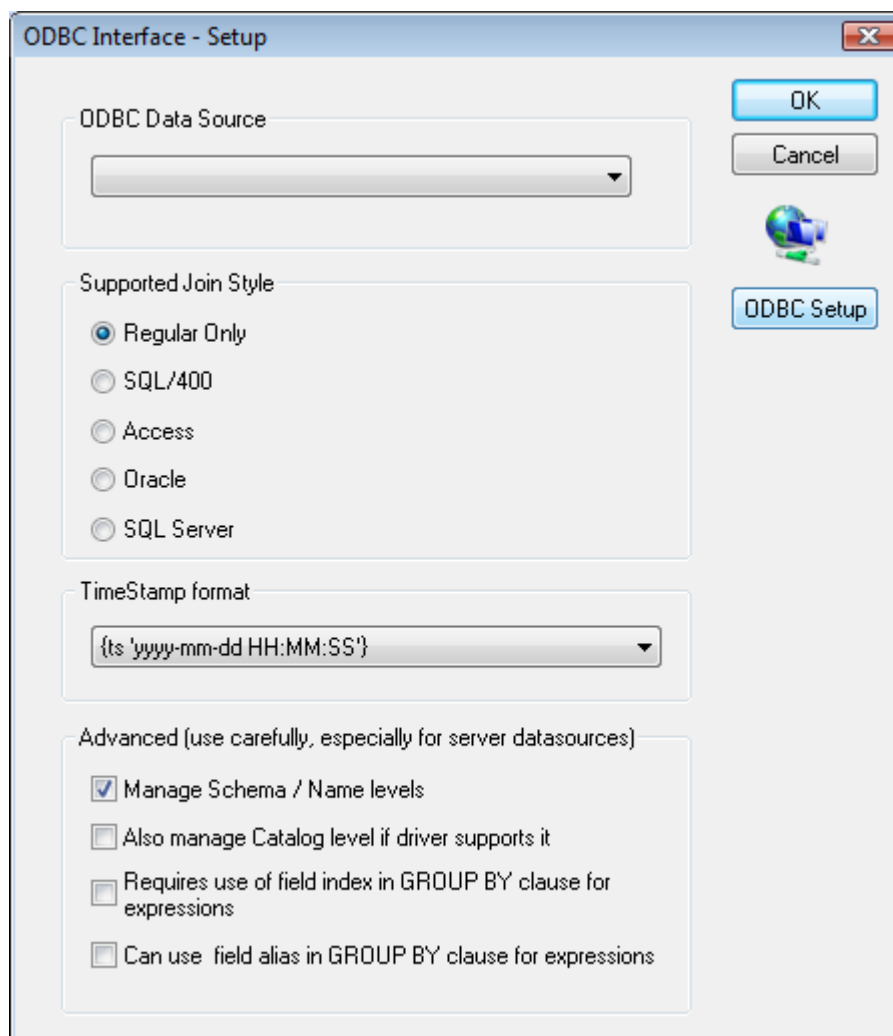


13. If you have a license to run Click&DECiDE Buidler and want to check the **Microsoft ODBC Text driver** using a **CSV** file, do the following:

- Open Administration Manager
- Create a new ODBD data source: **New> Data Source>**, then enter a Name and select **ODBC**:

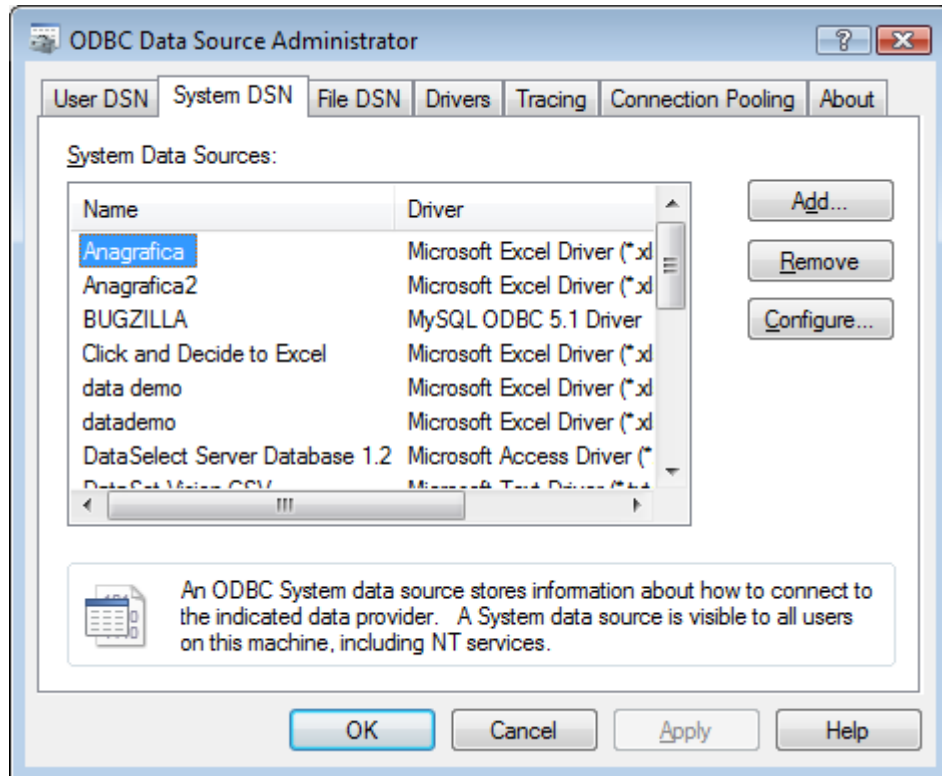


- Click **OK**

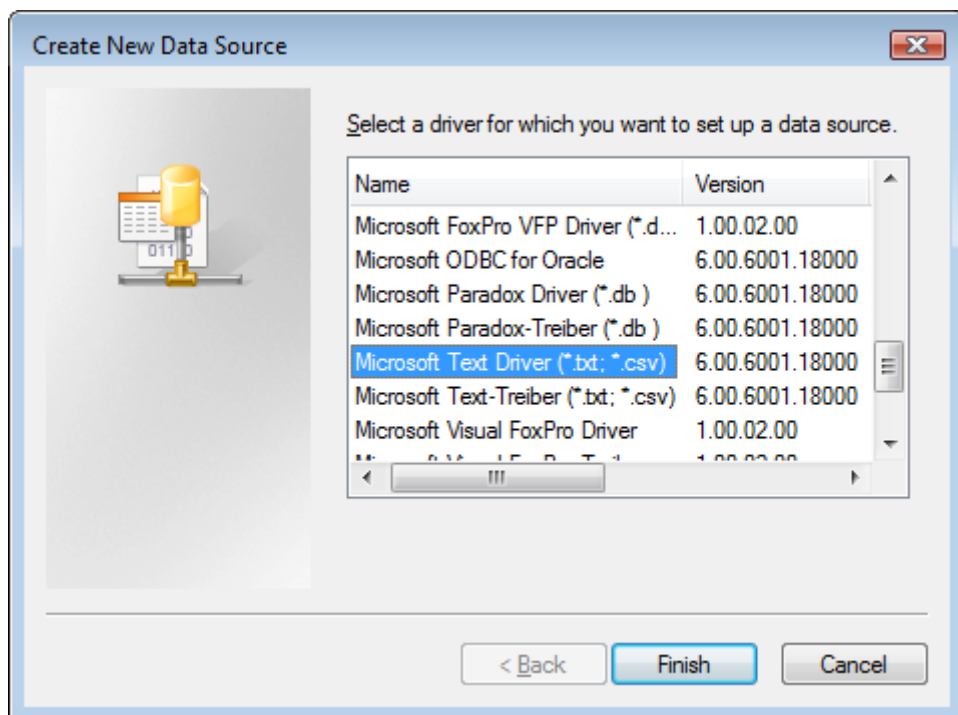


- Click **ODBC Setup**



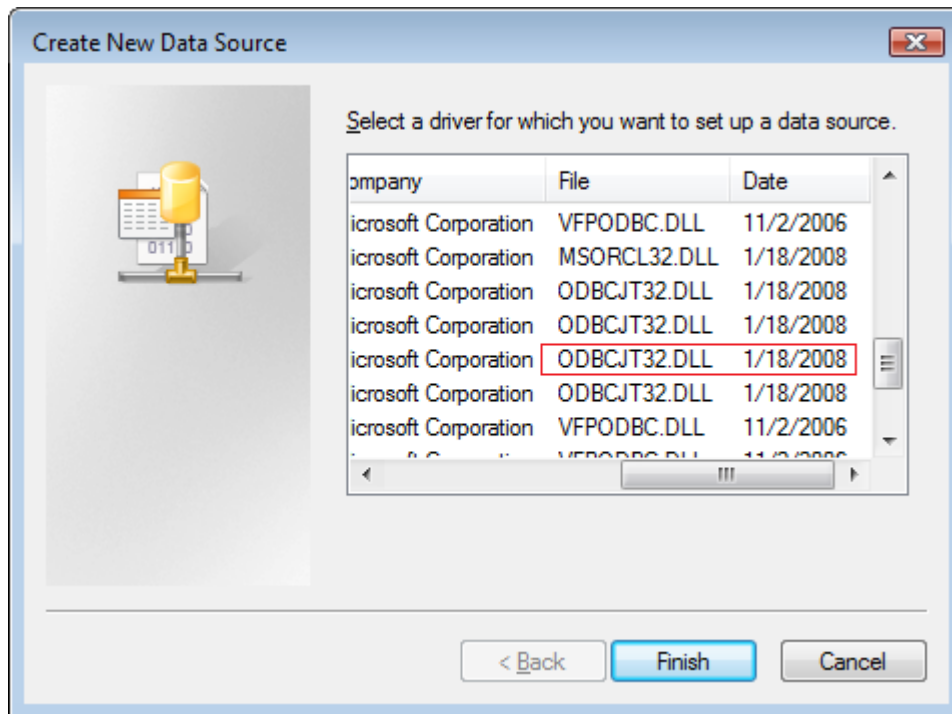


- Select **System DSN**
- Click **Add** and search for the **Microsoft Text Driver (\*.txt; \*.csv)**

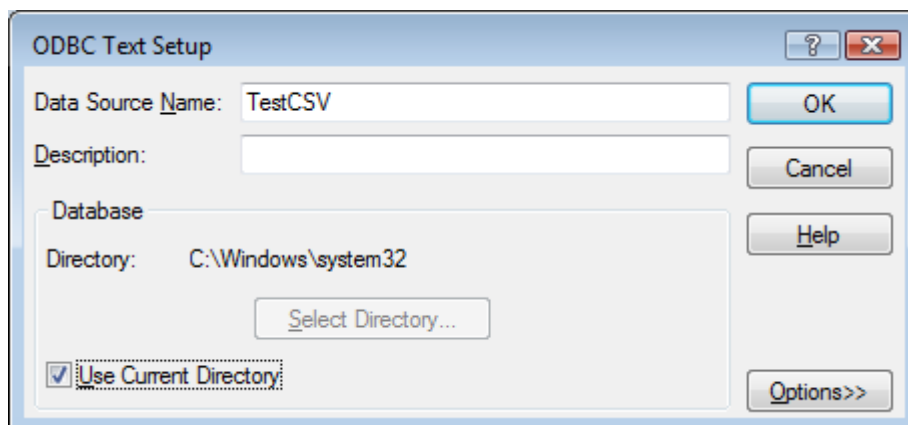


- Check the version and DLL name moving to the right

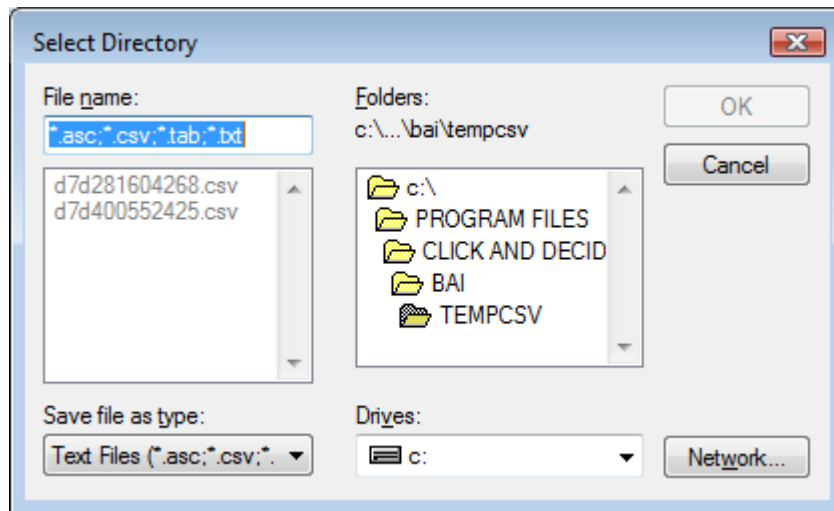




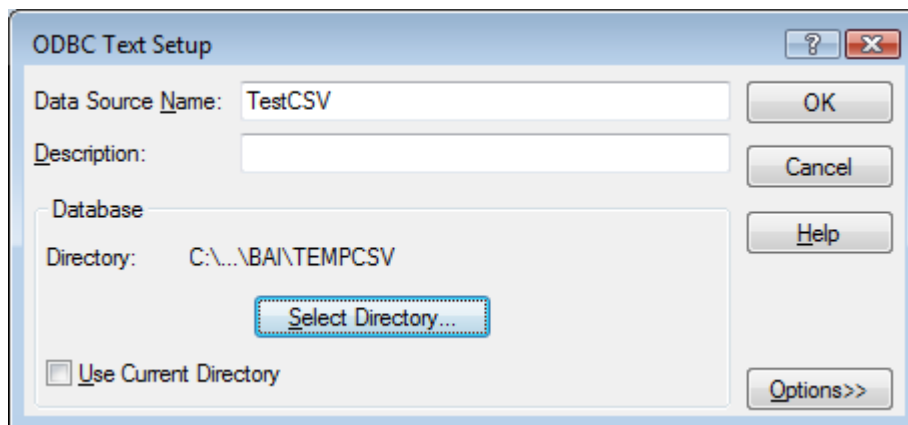
- Click **Finish**
- Enter a **Data Source Name**



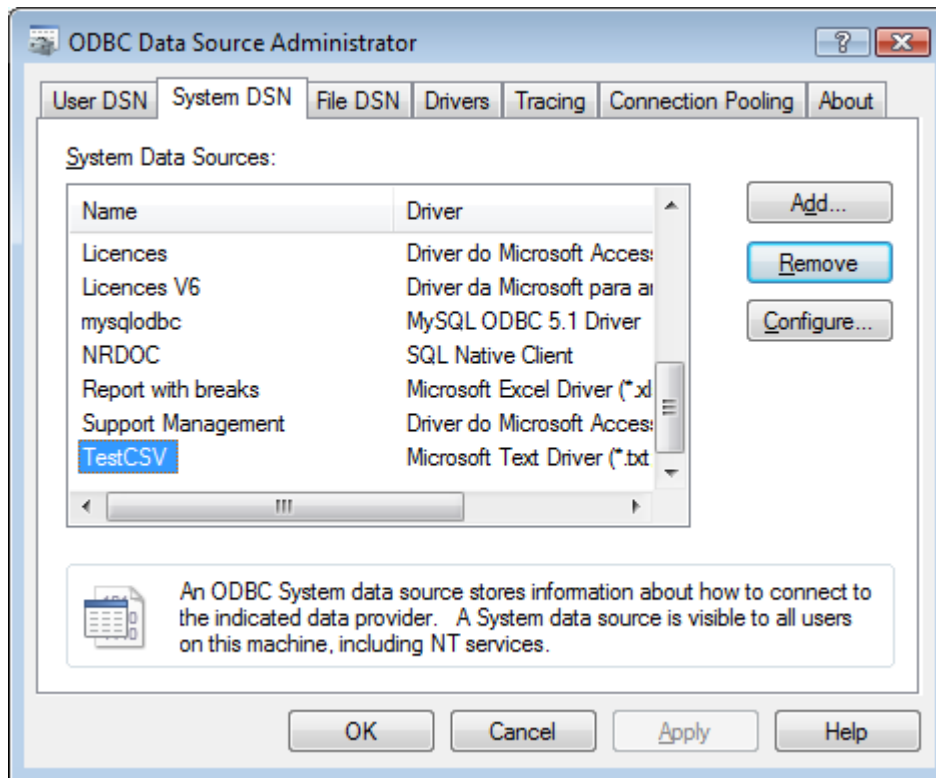
- Uncheck **Use Current Directory** and click **Select Directory**



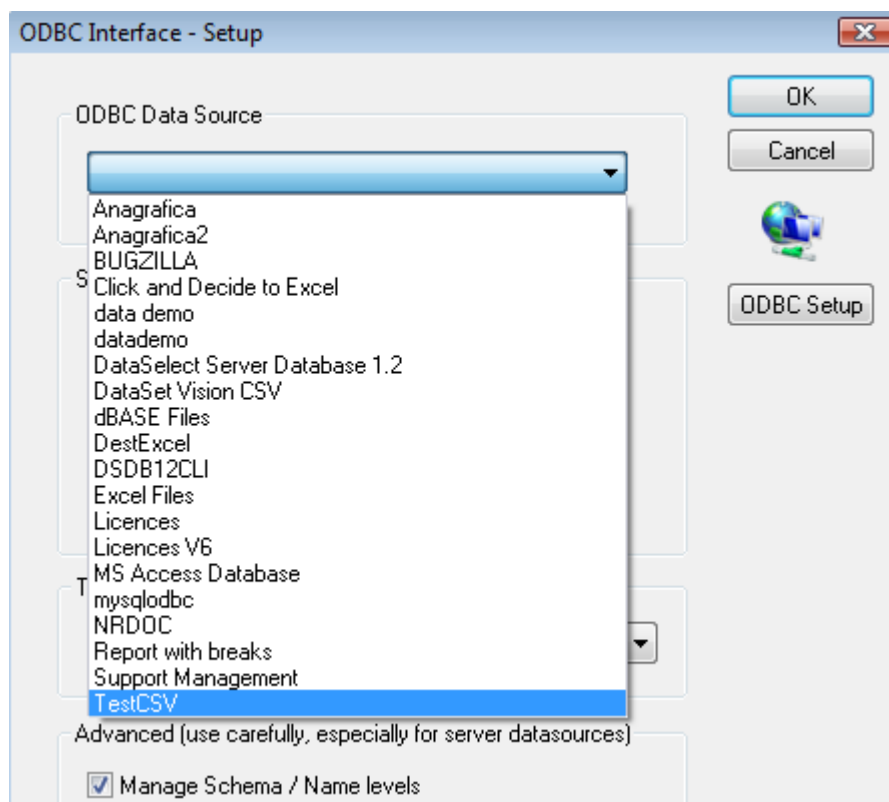
- Search for the path by default **C:\Program Files\Click and DECiDE\BAI\Tempcsv**



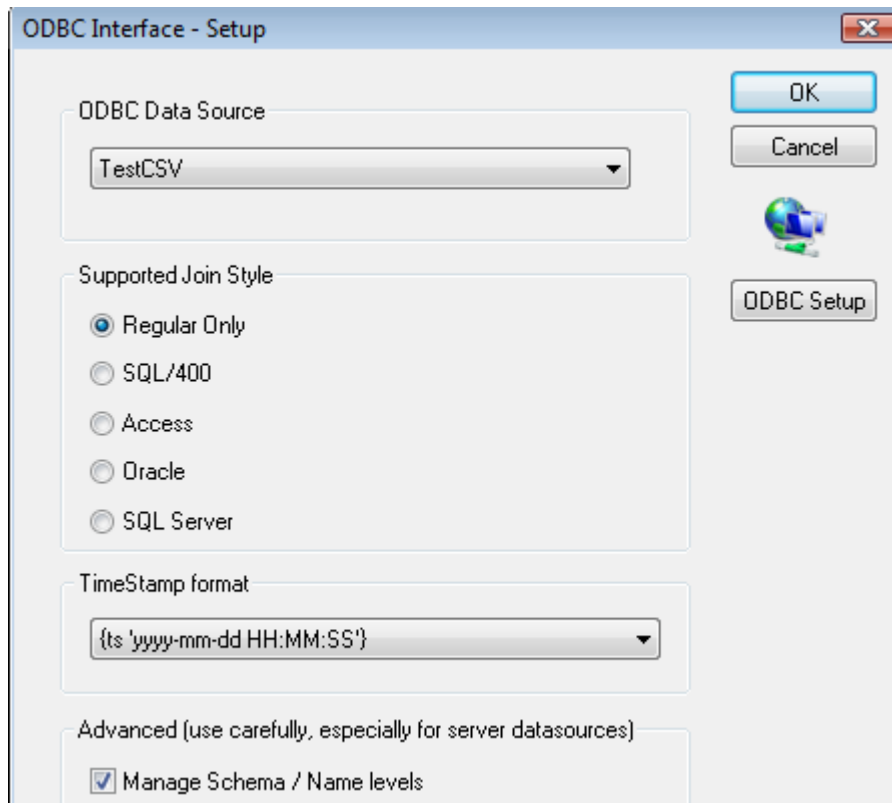
- Click **OK**
- This new Data Source Name should appear in the **System DSN** Tab:



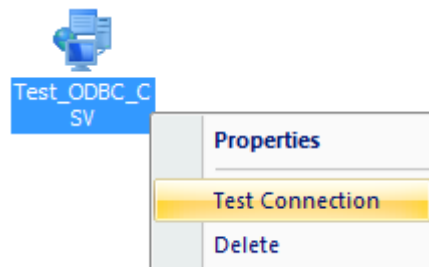
- Click **OK** and select the **TestCSV** system data source in the **ODBC Data Source** list:



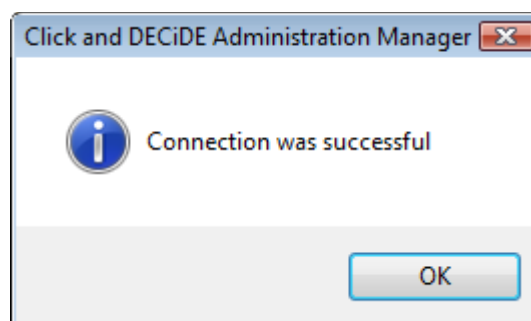
The ODBC Data Source should display as follow:



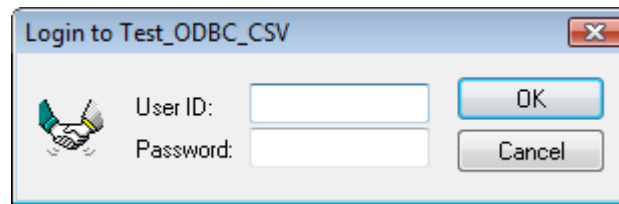
- Click **OK**
- Right click and select **Test Connection**



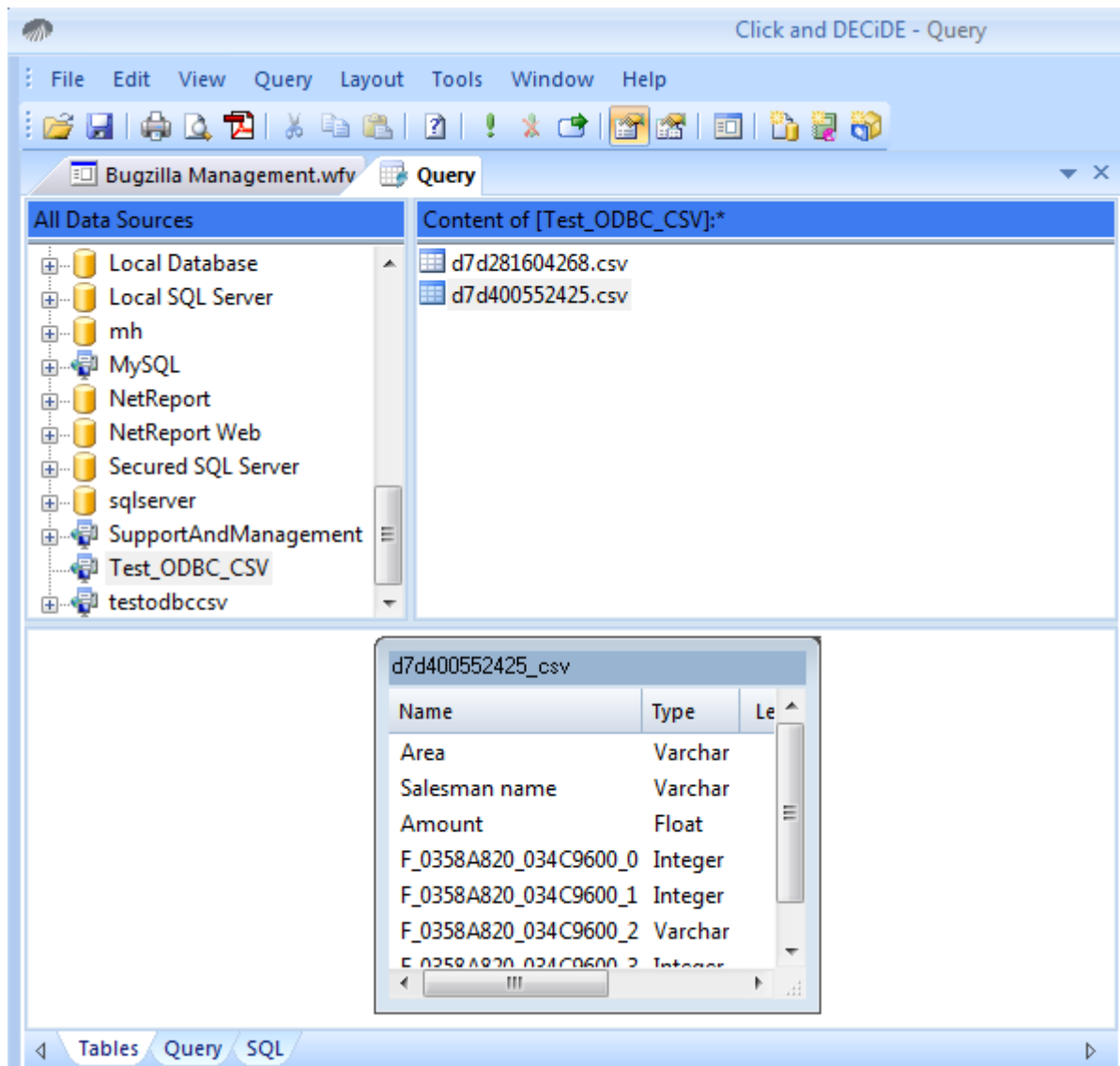
- Click **OK**



- Start now Click&DECiDE Builder to run this Data Source against a temporary CSV file located in the default **C:\Program Files\Click and DECiDE\BAI\Tempcsv**.
- Make a new Query and select the **Test\_ODBC\_CSV** data source:



- Enter no login and click **OK**
- **Select a temporary CSV file**



- Click the **Run** button (!)
- If you get no error, the Microsoft ODBC Text Driver is working fine.

	Name	Type	Length	Scale	Description
d7d400552425_csv					
<input checked="" type="checkbox"/>	Area	Varchar	255	0	
<input checked="" type="checkbox"/>	Salesman name	Varchar	255	0	
<input checked="" type="checkbox"/>	Amount	Float	15	0	
<input checked="" type="checkbox"/>	F_0358A820_034C9600_0	Integer	10	0	
<input checked="" type="checkbox"/>	F_0358A820_034C9600_1	Integer	10	0	
<input checked="" type="checkbox"/>	F_0358A820_034C9600_2	Varchar	255	0	
<input checked="" type="checkbox"/>	F_0358A820_034C9600_3	Integer	10	0	

	Area	Salesman name	Amount	F_0358A820_034C9600_0	F_0358A820_034C9600_1
1	NORTH-WEST	Bill Raley	66818.2	26	6
2	NORTH-WEST	Bill Raley	232418	23	7
3	NORTH-WEST	Bill Raley	82702.2	27	10
4	NORTH-WEST	Bill Raley	82450	22	12
5	NORTH-WEST	Bill Raley	76269.6	26	6
6	NORTH-WEST	Bill Raley	250530	21	7
7	NORTH-WEST	Bill Raley	96124.6	28	10

- In case of error, please send a print screen of this error to the Support Team.