

## Knowledge Base Article: Article 241

## How to parameterize IIS 8 on Windows 2012 Server for Click&amp;DECiDE?

**Date:** March 21th, 2013

**Problem:**

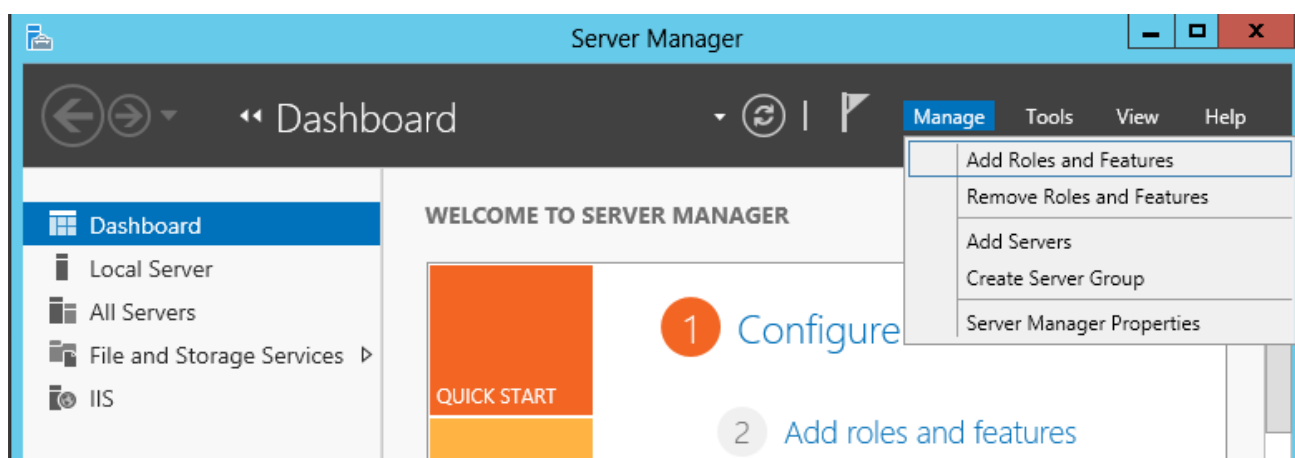
It is necessary to configure IIS 8 in Windows 2012 Server for Click&DECiDE before installing Click&DECiDE..

**Solution:**

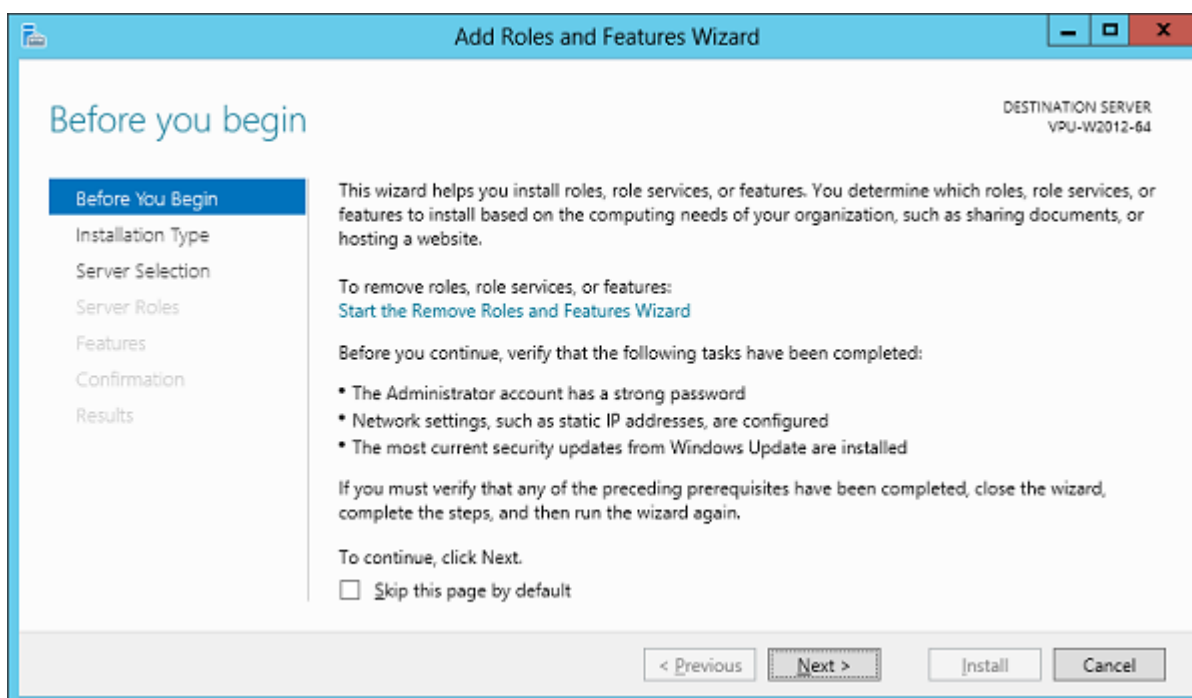
Before installing Click&DECiDE software, please check the IIS 8 configuration, to do so please follow the steps below:

**Steps**

1. Open **Server Manager**.
2. Under **Manage** menu, select **Add Roles and Features**

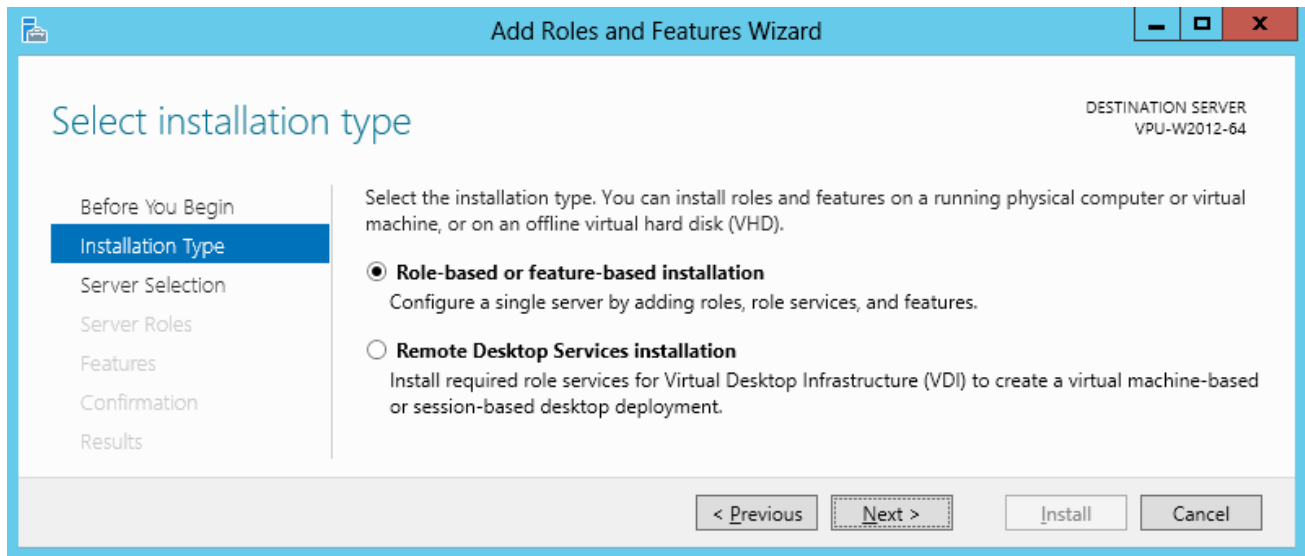


3. Click **Next**:

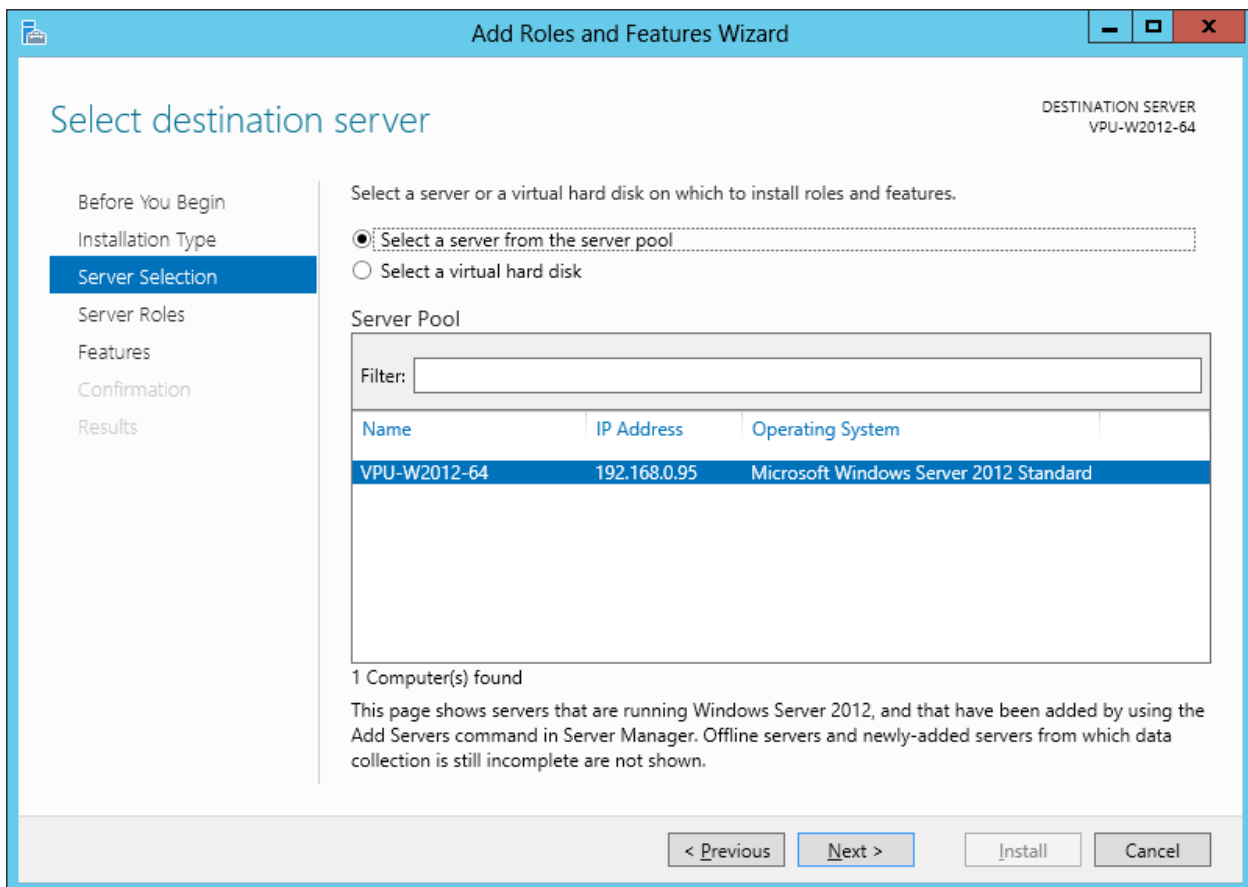




4. Click **Next**:



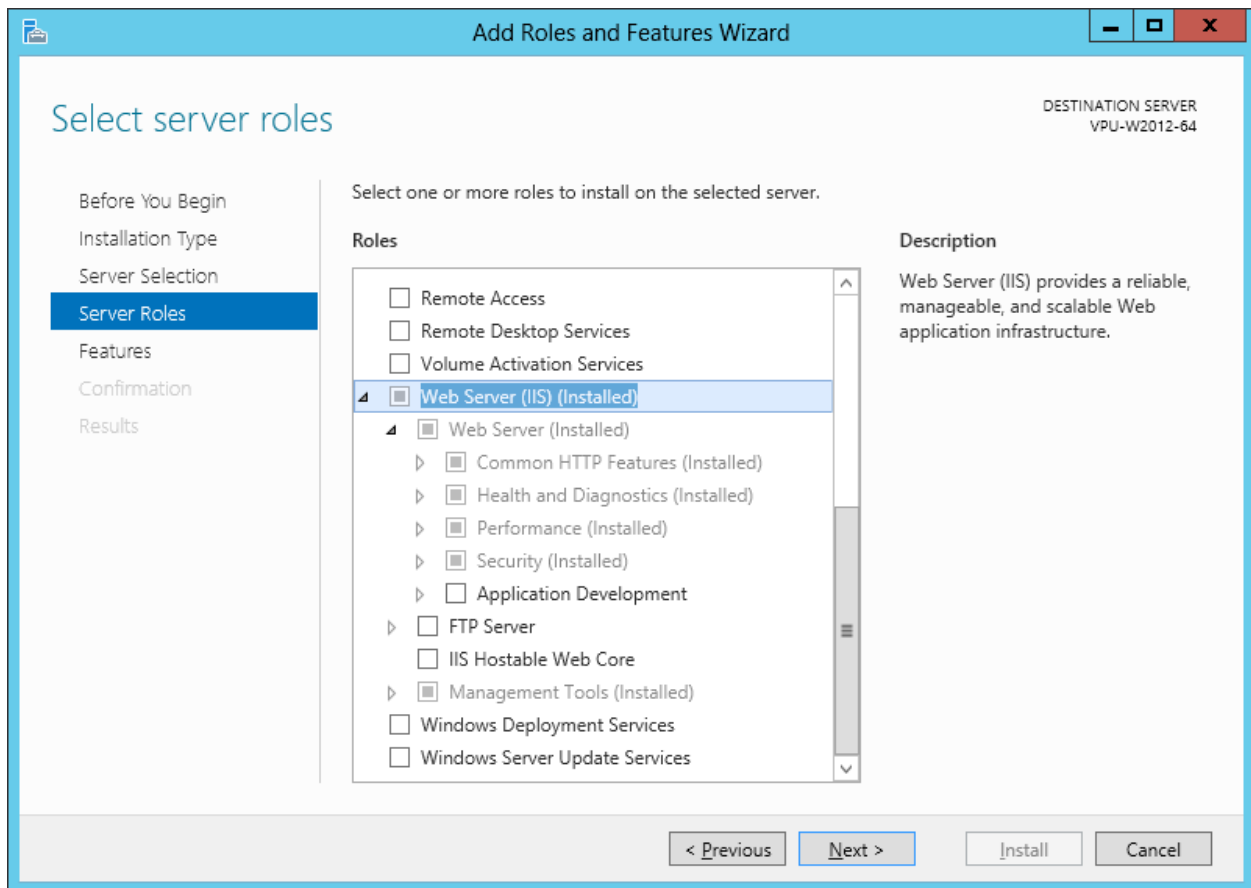
5. Click **Next**:





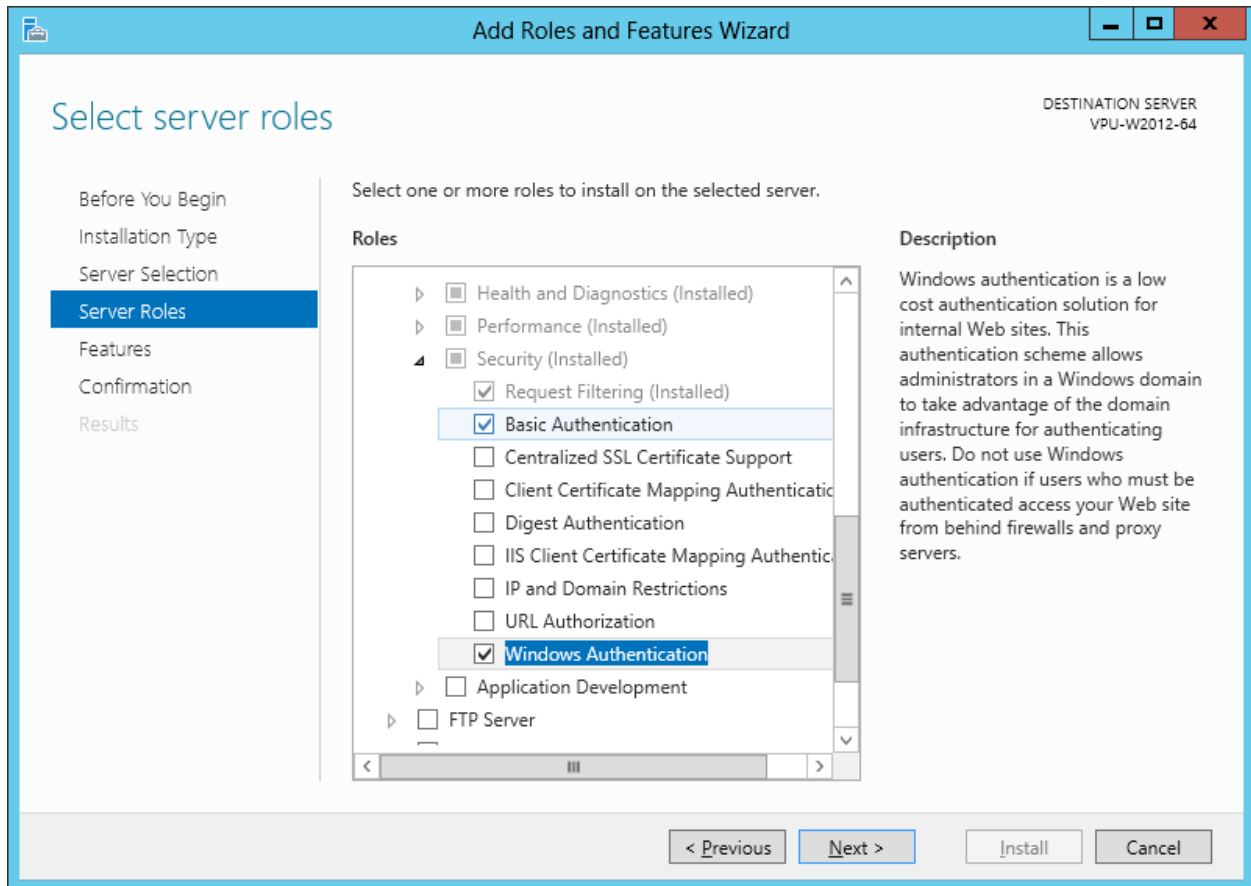
6. The default following role services are proposed by default when installing IIS:

- **Common HTTP Features**
  - Static Content
  - Default Document
  - Directory Browsing
  - HTTP Errors
- **Health and Diagnostics**
  - HTTP Logging
- **Performance**
  - Static Content Compression
- **Security**
  - Request Filtering
- **Application Development**
  - Nothing by default
- **Management Tools**
  - IIS Management Console



7. Enable the following options in **Security**:

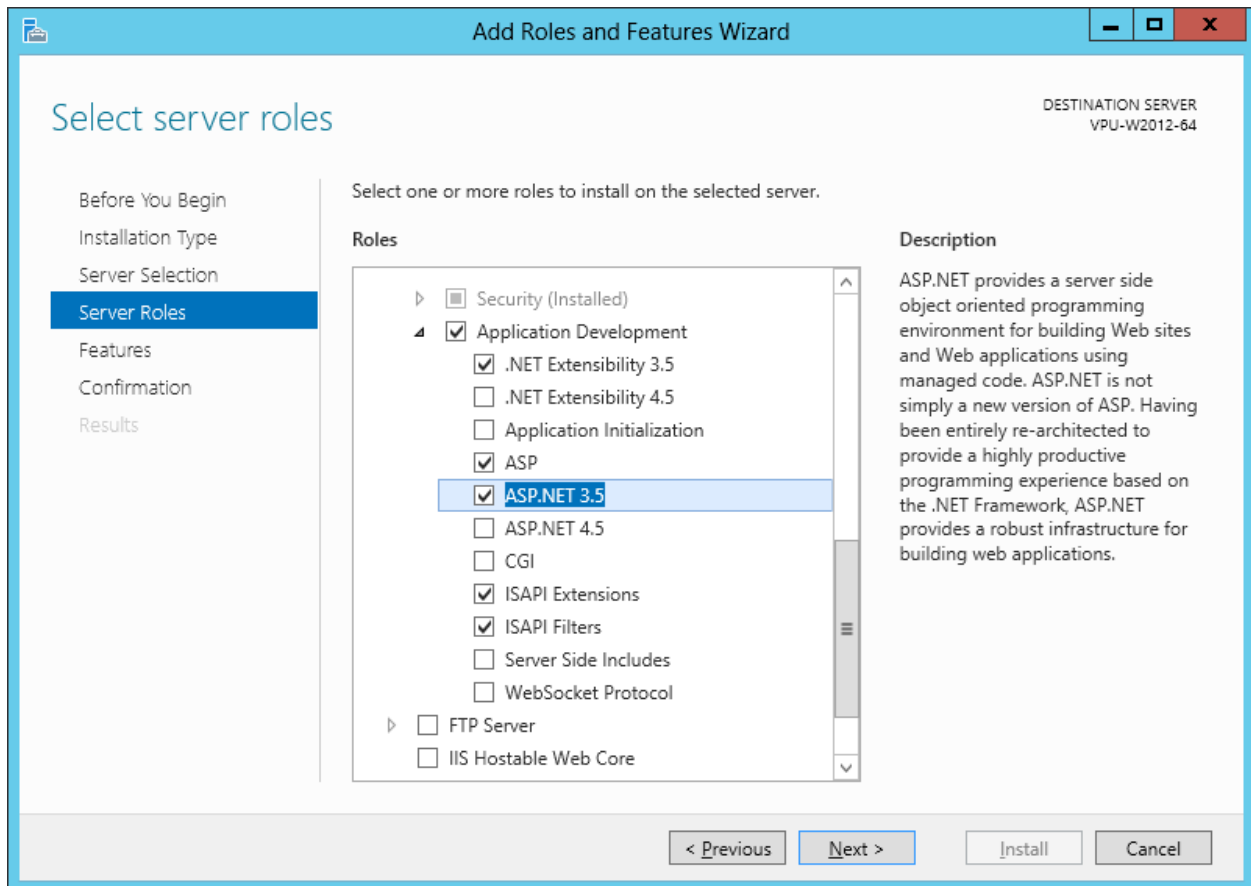
- **Basic Authentication**
- **Windows Authentication**



Click **Next**

8. Enable the following options in **Application Development**:

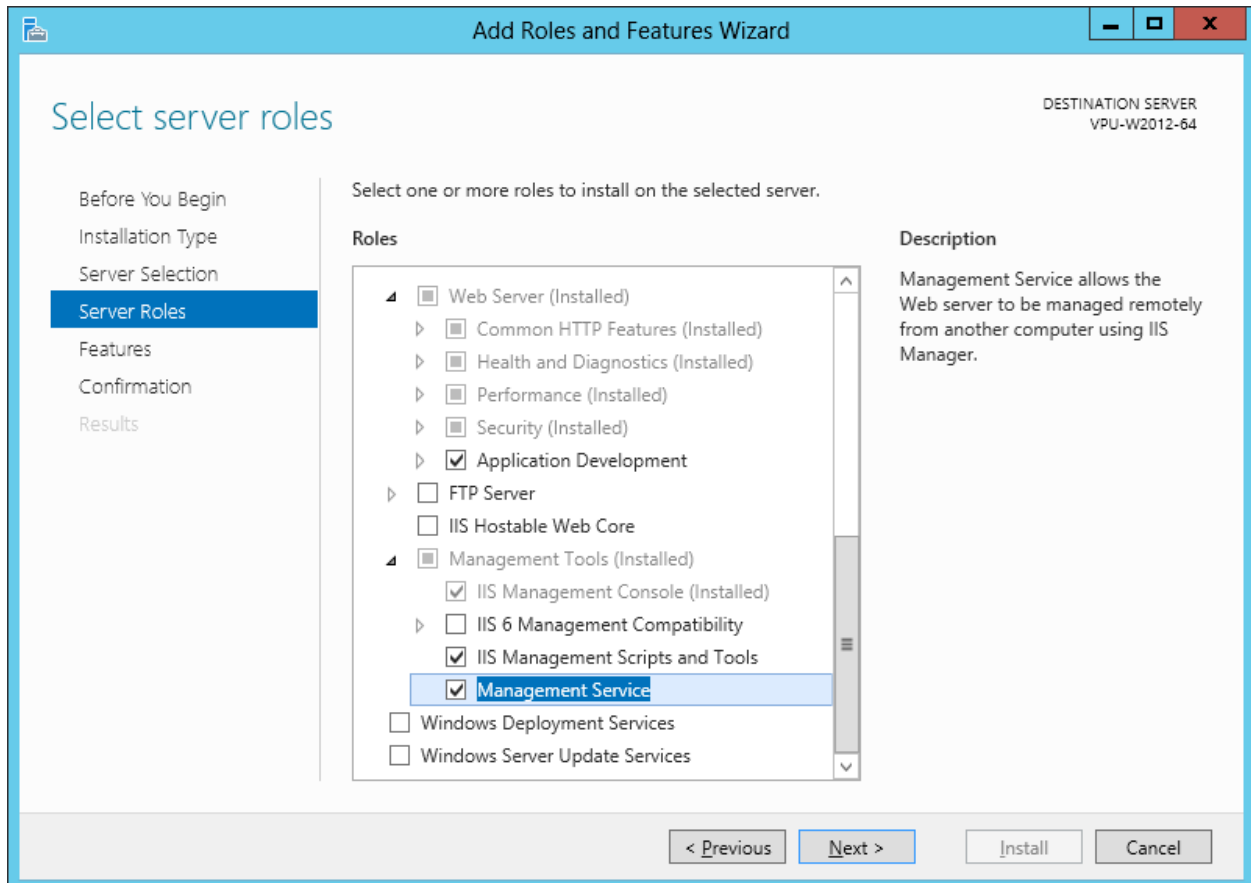
- **ASP.NET 3.5** - this will automatically select:
  - **.NET extensibility 3.5**
  - **ISAPI extensions**
  - **ISAPI filter**
  
- **ASP** – needed only with Click&DECiDE **NSI** for the Flat File Agent Status.



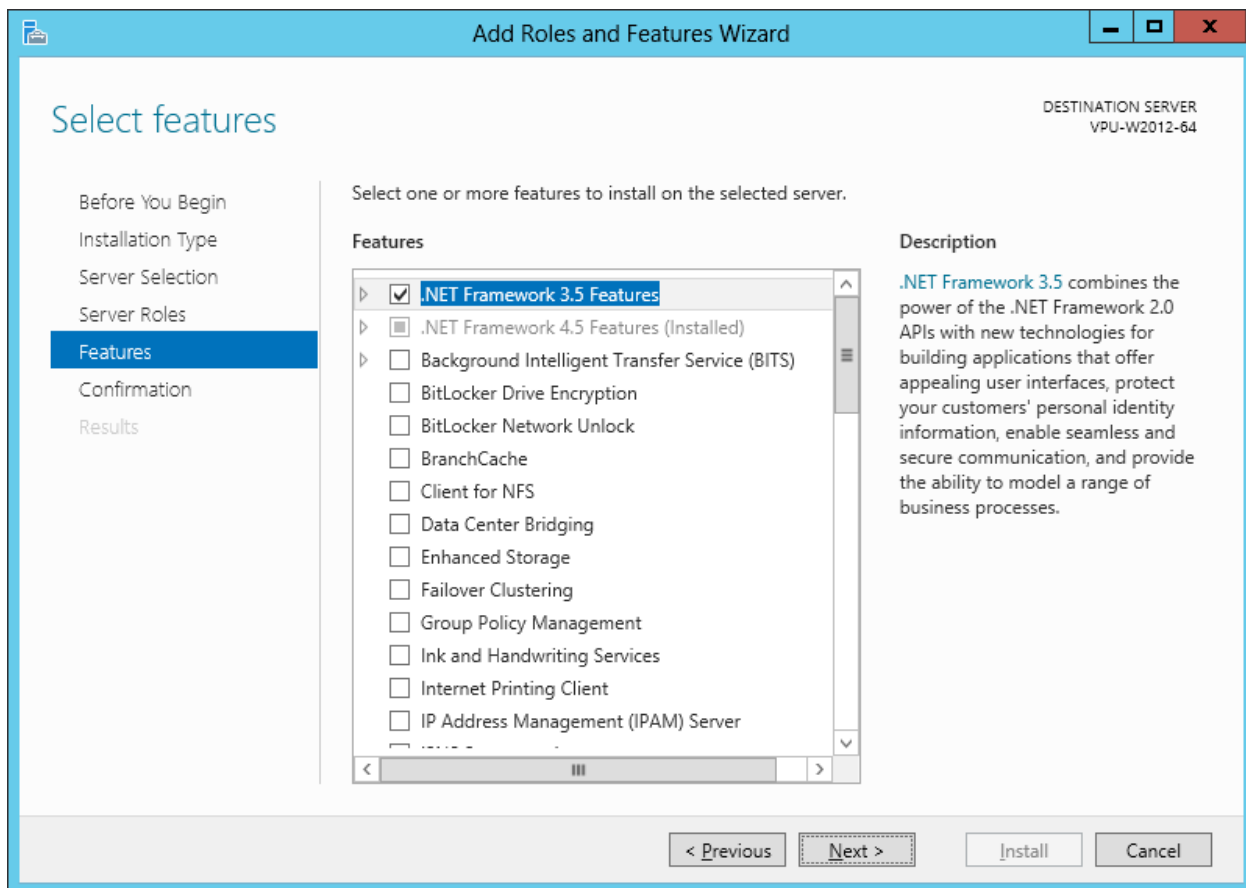
Click **Next**

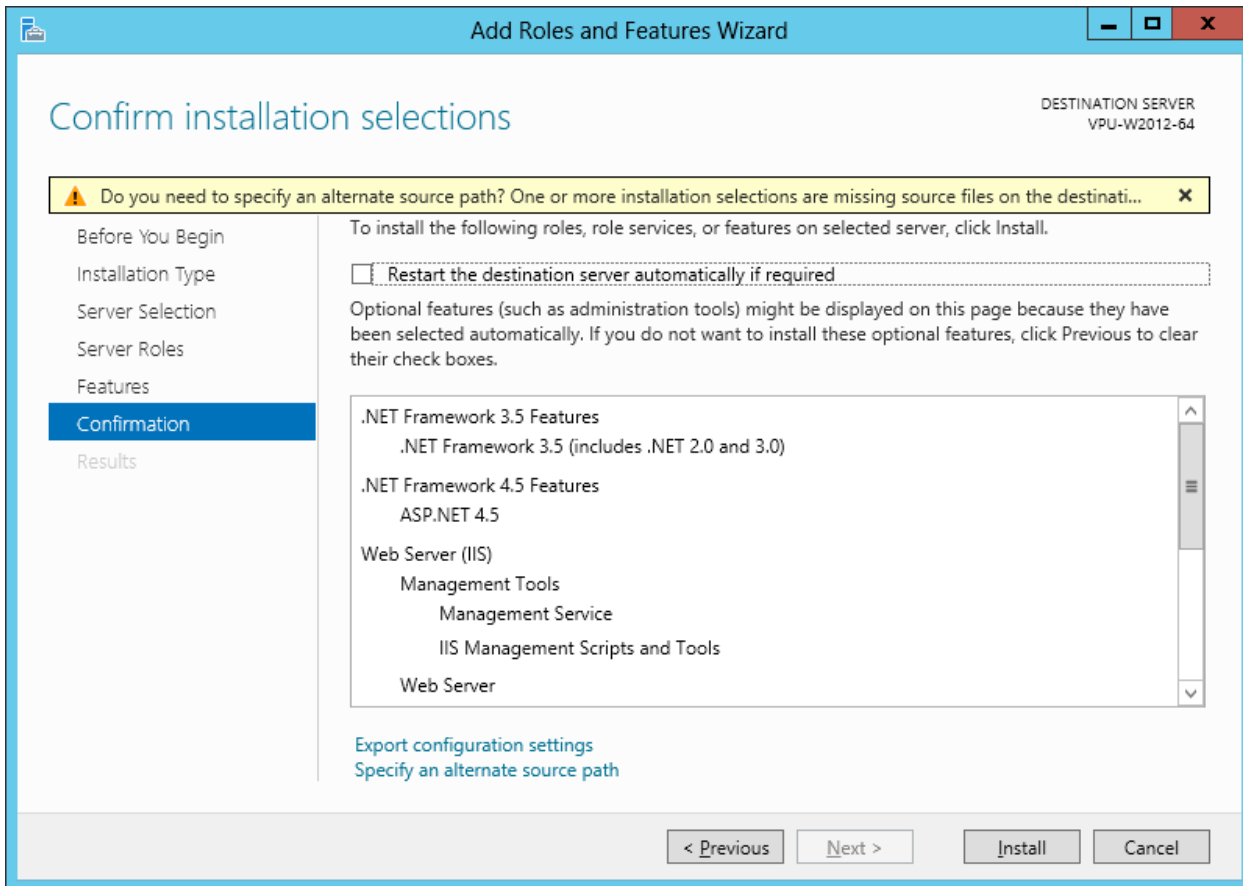
9. Enable the following options in **Management Tools**:

- **IIS Management Scripts & Tools**
- **Management Service**



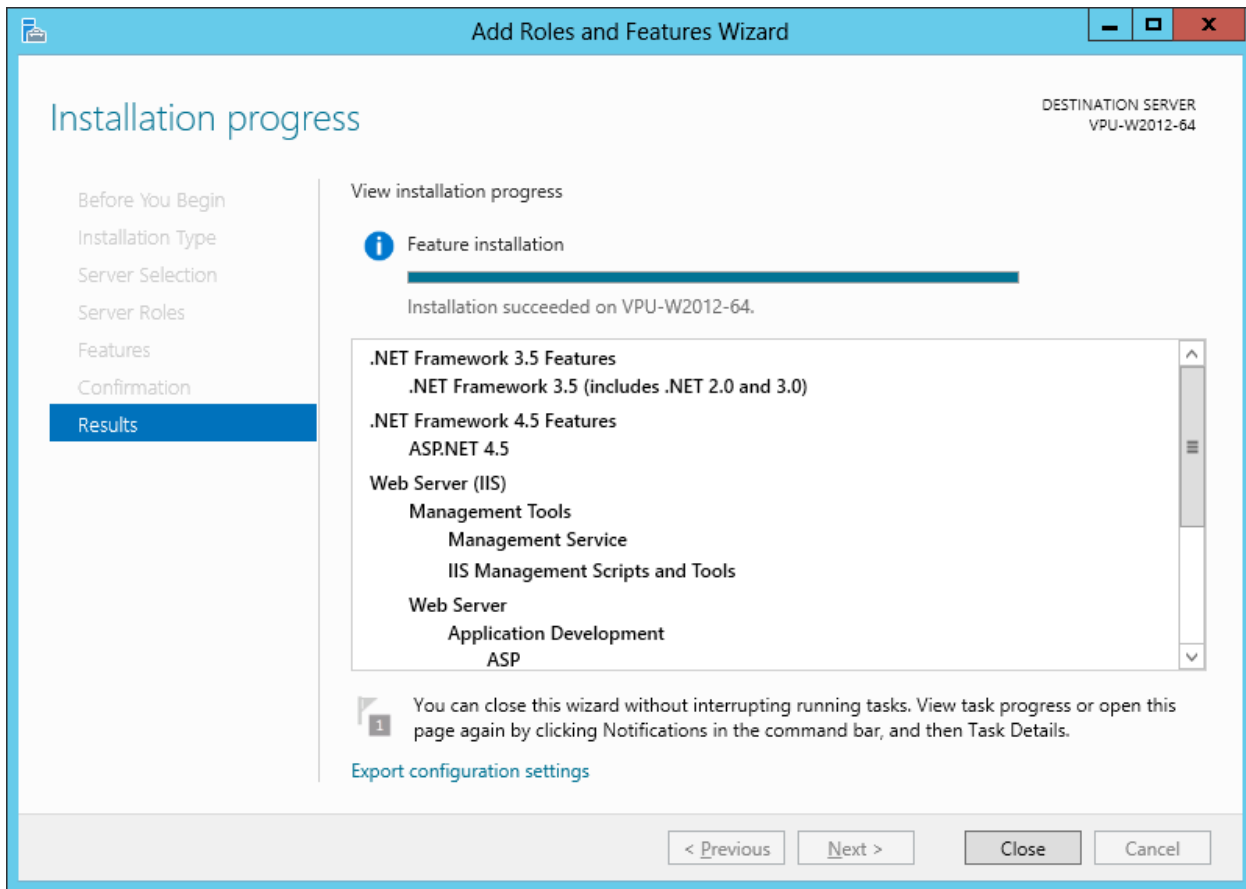
Click **Next**

10. Click **Next**:


11. Click **Install**:




12. Click **Close** once installation is done.



13. Install now Click&DECiDE. The Click and DECiDE setup will check if the Microsoft .NET Framework 3.5 and SQL Server are installed.

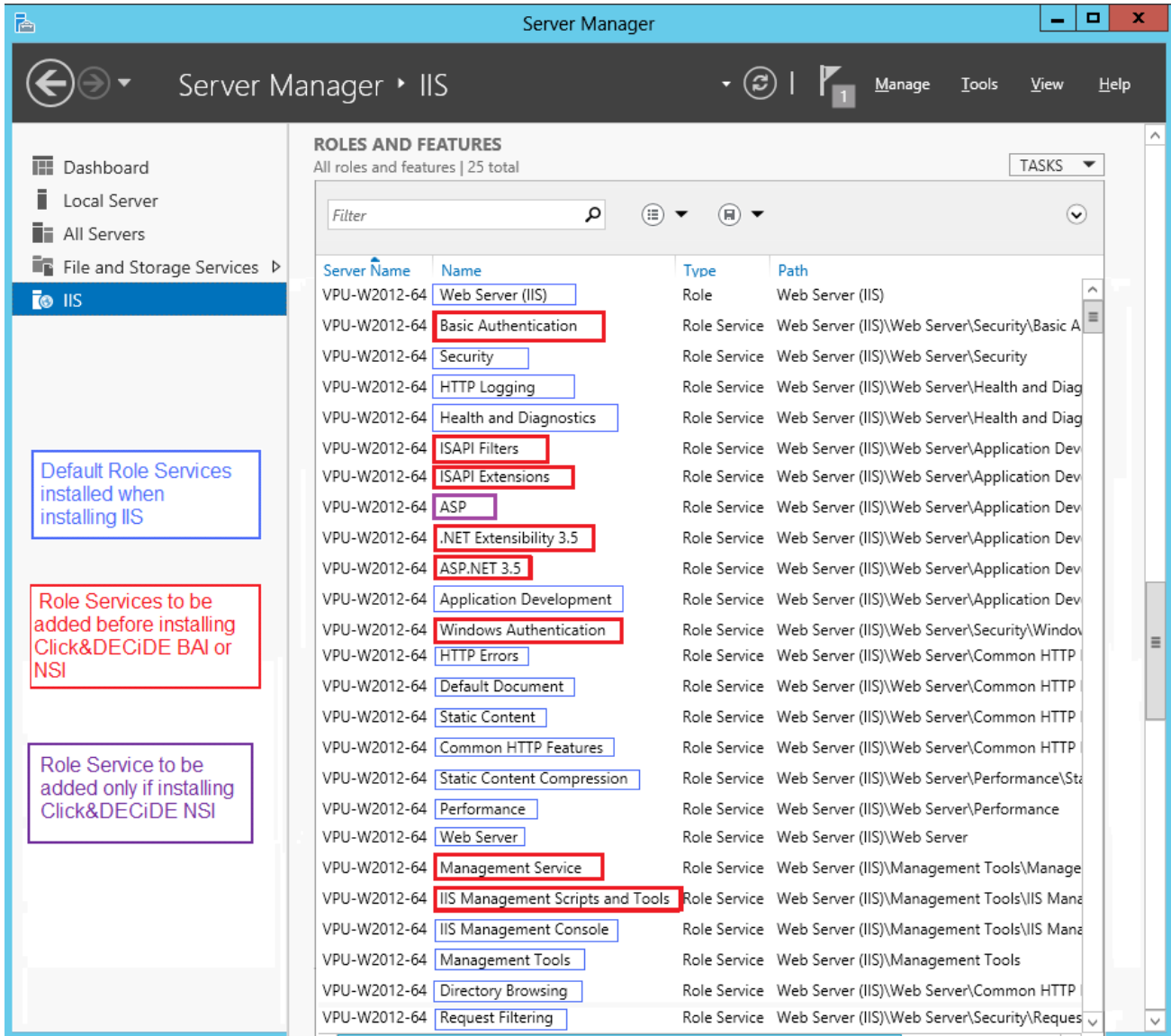
14. Click **Install** to install the Microsoft .NET Framework 3.5 and SQL Server 2005, if they have not been previously installed. Warning: the Microsoft .NET Framework 3.5 must be installed after IIS.

15. If the Microsoft .NET Framework was installed before IIS you can follow the steps below to enable the Microsoft .NET Framework in IIS:

- i. Start **Windows PowerShell**
- ii. Go to the following directory where the Microsoft framework was installed:  
C:\Windows\Microsoft.NET\Framework\v2.0.50727 (by default).
- iii. Run the following command: `aspnet_regiis -i`

16. Continue with the installation of Click&DECiDE.

17. Checking the list of the IIS 8 Installed Features:  
 open **Server Manager**, then select **IIS** in the left list and go down to the **Roles and Features** block:



**ROLES AND FEATURES**  
 All roles and features | 25 total

Server Name	Name	Type	Path
VPU-W2012-64	Web Server (IIS)	Role	Web Server (IIS)
VPU-W2012-64	Basic Authentication	Role Service	Web Server (IIS)\Web Server\Security\Basic A
VPU-W2012-64	Security	Role Service	Web Server (IIS)\Web Server\Security
VPU-W2012-64	HTTP Logging	Role Service	Web Server (IIS)\Web Server\Health and Diag
VPU-W2012-64	Health and Diagnostics	Role Service	Web Server (IIS)\Web Server\Health and Diag
VPU-W2012-64	ISAPI Filters	Role Service	Web Server (IIS)\Web Server\Application Dev
VPU-W2012-64	ISAPI Extensions	Role Service	Web Server (IIS)\Web Server\Application Dev
VPU-W2012-64	ASP	Role Service	Web Server (IIS)\Web Server\Application Dev
VPU-W2012-64	.NET Extensibility 3.5	Role Service	Web Server (IIS)\Web Server\Application Dev
VPU-W2012-64	ASP.NET 3.5	Role Service	Web Server (IIS)\Web Server\Application Dev
VPU-W2012-64	Application Development	Role Service	Web Server (IIS)\Web Server\Application Dev
VPU-W2012-64	Windows Authentication	Role Service	Web Server (IIS)\Web Server\Security\Windov
VPU-W2012-64	HTTP Errors	Role Service	Web Server (IIS)\Web Server\Common HTTP
VPU-W2012-64	Default Document	Role Service	Web Server (IIS)\Web Server\Common HTTP
VPU-W2012-64	Static Content	Role Service	Web Server (IIS)\Web Server\Common HTTP
VPU-W2012-64	Common HTTP Features	Role Service	Web Server (IIS)\Web Server\Common HTTP
VPU-W2012-64	Static Content Compression	Role Service	Web Server (IIS)\Web Server\Performance\Sta
VPU-W2012-64	Performance	Role Service	Web Server (IIS)\Web Server\Performance
VPU-W2012-64	Web Server	Role Service	Web Server (IIS)\Web Server
VPU-W2012-64	Management Service	Role Service	Web Server (IIS)\Management Tools\Manage
VPU-W2012-64	IIS Management Scripts and Tools	Role Service	Web Server (IIS)\Management Tools\IIS Mana
VPU-W2012-64	IIS Management Console	Role Service	Web Server (IIS)\Management Tools\IIS Mana
VPU-W2012-64	Management Tools	Role Service	Web Server (IIS)\Management Tools
VPU-W2012-64	Directory Browsing	Role Service	Web Server (IIS)\Web Server\Common HTTP
VPU-W2012-64	Request Filtering	Role Service	Web Server (IIS)\Web Server\Security\Reques

**Default Role Services installed when installing IIS**

**Role Services to be added before installing Click&DECiDE BAI or NSI**

**Role Service to be added only if installing Click&DECiDE NSI**